

HAMBURG SUSTAINABILITY SESSION NO. 2

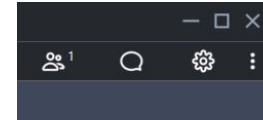
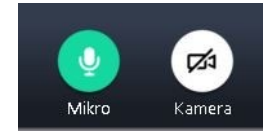
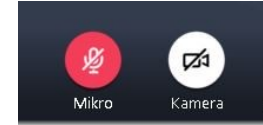
SUSTAINABILITY LEADERSHIP

20th July 2022 – Hamburg Meets São Paulo
16.00 – 17.30 am CEST
online (in English)



Technical Guidance

- ✓ Please **switch off your microphone** – Simply click on the icon you see on the **bottom center** of your screen to mute / unmute.
- ✓ **Questions** are most welcome – Please use the **chat** for this (simply click on the bubble symbol).
Our team will record your question and the moderator will pose them at an appropriate time.



Hamburg Sustainability Session – Sustainability Leadership

Agenda

16.00 – 16.10: Introduction by the organizers

16.10 – 16.30:

João Eustachio

Research Associate at the Hamburg
University of Applied Sciences

KEYNOTE 1



16.35 – 16.55:

Gustavo Fructuozo Loiola

Program Manager at the UN PRME

KEYNOTE 2

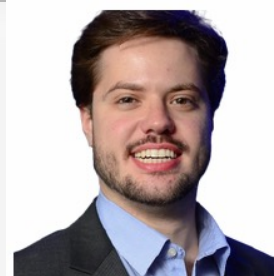


17.00 – 17.20:

Orlando Nastri Neto

ESG Manager at Citrosuco

KEYNOTE 3



17.20 – 17.30/45: Virtual discussion and exchange networking

Hamburg Sustainability Session – Sustainability Leadership

The European School of Sustainability Science and Research (ESSSR)

ESSSR: Established in 2017 affiliated with the Hamburg University of Applied Sciences (HAW)

Vision: An *inter-university consortium with more than 60 universities* in 24 EU member (and accession) states that share an interest on **sustainability science** and on matters related to **sustainable development**.

Mission: To provide a *framework* upon which teaching + research within the remit of sustainability science may be further developed at European universities through **(1) research projects**, **(2) PhD training** and **(3) quality scientific publications** in high-calibre journals.

More on our publications and projects: www.esssr.eu



Hamburg Sustainability Session – Sustainability Leadership

Keynote 1: João Eustachio- Research Associate at HAW

- Sustainability Leadership – An Overview

HAMBURG SUSTAINABILITY SESSION NO. 2: TOWARDS A CIRCULAR ECONOMY

Keynote 2: **Gustavo Fructuozo Loiola** - Program Manager at UN PRME

- New skillset for leadership education

HAMBURG SUSTAINABILITY SESSION NO. 2: TOWARDS A CIRCULAR ECONOMY

Keynote 3: Orlando Nastri Neto - Manager at Citrosuco

- ESG leadership: the role of ambition for positive impact

HAMBURG SUSTAINABILITY SESSION NO. 2: TOWARDS A CIRCULAR ECONOMY

You are cordially invited to our next HAMBURG SUSTAINABILITY SESSION!

Your ESSSR contacts at HAW Hamburg



Prof. Dr. Walter Leal

Director, Sustainability and Climate Change Management
Research and Transfer Centre (FTZ NK)

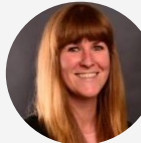
walter.leal2@haw-hamburg.de



Franziska Wolf

Senior Project Manager and Deputy Head, Sustainability and
Climate Change Management Research and Transfer Centre
(FTZ NK)

franziska.wolf@haw-hamburg.de



Jennifer Pohlmann

Senior Project Manager and Deputy Head, Sustainability and
Climate Change Management Research and Transfer Centre
(FTZ NK)

JenniferLouise.Pohlmann@haw-hamburg.de



Cintia Nunes

Research and Transfer Centre FTZ-NK: EU-Project Manager

Cintia.Nunes@haw-hamburg.de



Dr. Kalterina Shulla

Project Manager Sustainability Projects

Kalterina.Shulla@haw-hamburg.de



Joao Eustachio

Research Associate – PhD Candidate

Joao.PaulinoPiresEustachio@haw-hamburg.de

Hamburg Sustainability Session – Sustainability Leadership

Let's discuss and exchange!

Do you have questions
for our keynote
speakers?

Do you have any
experiences or tips you
would like to share?

Do you have any questions
regarding the concept or
practical implementation?



→ Please feel free to speak/ask

→ Please feel free to also connect bilaterally by using the chat

Hamburg Sustainability Session – Sustainability Leadership



Thank you for your participation!



Hamburg Sustainability Session – Sustainability Leadership

HAMBURG SUSTAINABILITY SESSION SUSTAINABILITY LEADERSHIP

20th July 2022 – Hamburg Meets São Paulo

João Eustachio

Sustainability Leadership – An overview



Joao Eustachio

Economist and PhD Candidate

- *University of São Paulo - Brazil*

Research Associate

- *Hamburg University of Applied Sciences (HAW Hamburg) - Germany*

- European School of Sustainability Science and Research

- GER-BRAS ScienceNet

Research Field:

- Leadership for Corporate Sustainability**
- Education for Sustainable Development**
- Change Management for Corporate Sustainability**



Hamburg Sustainability Session – Sustainability Leadership

Context

- **Human being** continues to move several earth subsystems **beyond their natural limits of viability** (Biermann et al., 2012; Giddings et al., 2002; Griggs et al., 2013; Müller et al., 2015; Rockström et al., 2009).
- **Organizations are open systems - promote positive and negative externalities.**
- **Sustainable value for its stakeholders** (Figge & Hahn, 2004; Lo & Sheu, 2007; Malik et al., 2018; Porter & Kramer, 2019).
- **Corporate Sustainability – “meeting the needs of a firm’s direct and indirect stakeholders without compromising its ability to meet the needs of future stakeholders as well”** (Dyllick & Hockerts, 2002, p. 131).
- **Companies are pursuing More Sustainability-Oriented State.**



Hamburg Sustainability Session – Sustainability Leadership

*“Change, by definition, requires creating a new system,
which in turn always demands leadership.”*

John P. Kotter (1995, p. 60)

Hamburg Sustainability Session – Sustainability Leadership

Aspects of Sustainability Leadership

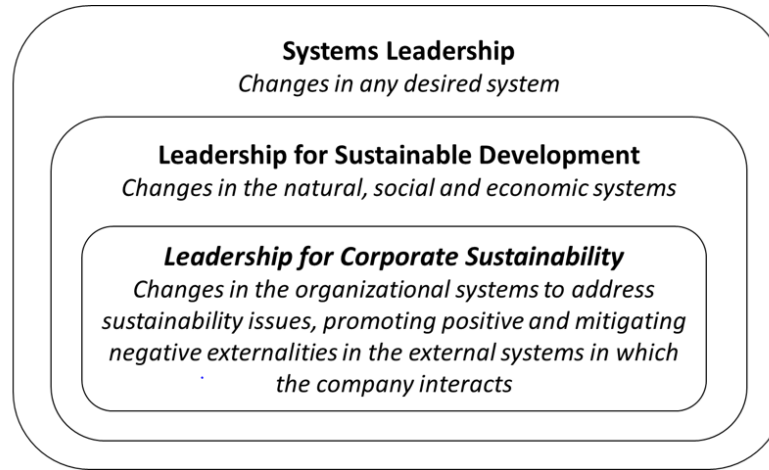


Figure 7. Differences among leadership concepts.

Source: Developed based on the author's interpretation of Dreier et al. (2019), Metcalf & Benn (2013) and Visser & Courtice (2011)

Characteristics of sustainability-driven leaders

Leadership Styles

- Transactional
- Transformational
- Spiritual Leadership

Behaviours
Attitudes
Values



Sustainable Development
Competencies

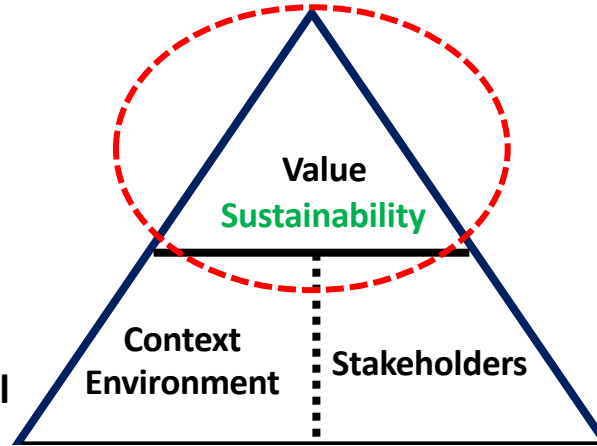
Sustainable Development Knowledge

Conducting business

Education Leaders

Hamburg Sustainability Session – Sustainability Leadership

P - Political
E - Economic
S - Social
T - Technological



Internal
Company Owner
Shareholders
Employees

External
Society
Government
competitors
Suppliers
Community

WORLD SYMPOSIUM ON SUSTAINABILITY LEADERSHIP (WSSL 2023)

Submissions:

Deadline for submission of abstracts: 30th October 2022
Deadline for submission of papers: 30th January 2023

Please send your abstract to:

SDG-Publications Team
SDG-Publications@haw-hamburg.de

Organisation:



Cooperation:



São Paulo, Brazil, 4th - 5th May 2023
University of São Paulo

Hamburg Sustainability Session – Sustainability Leadership



Thank you for your attention!

João Eustachio

Joao.PaulinoPiresEustachio@haw-hamburg.de

Hamburg Sustainability Session – Sustainability Leadership

ESG leadership: the role of ambition for positive impact

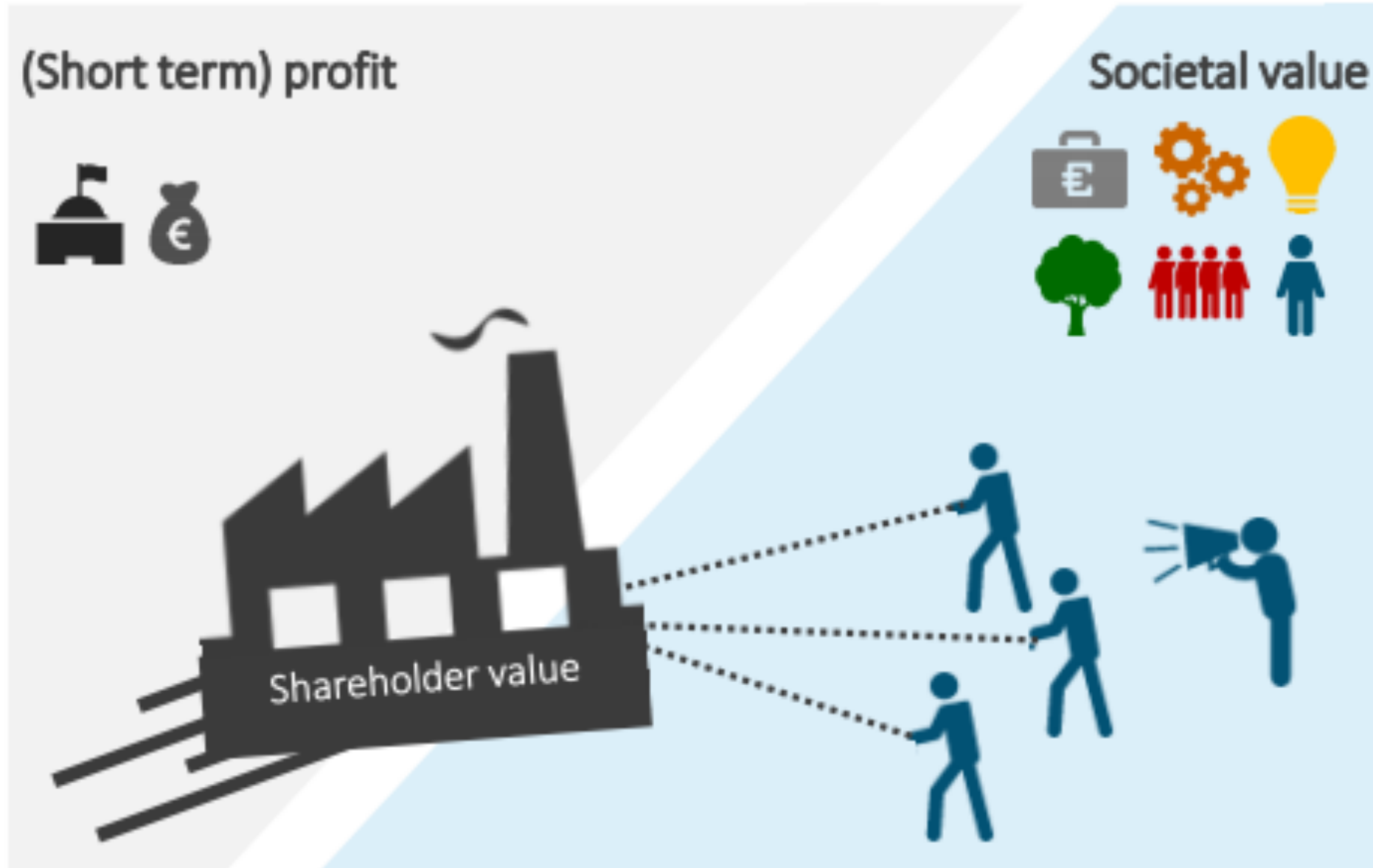
Orlando Nastri, ESG Manager

Hamburg Sustainability Sessions

July/2022



Challenges of our time



Orlando Nastri






Orlando Nastri

1. Experience

- 10 years leading projects in multinationals and third sector: **ESG, Impact, Strategy, Value Chain, Housing, Energy**
- **International experience** of projects and relations in Bangladesh, Peru, Netherlands, Austria, Germany
- Professor at **business schools** in Brazil

2. Education

- Bachelor's degree in **Business** 
- Executive training in **Innovation** 
- MSc in **Sustainability** 



01

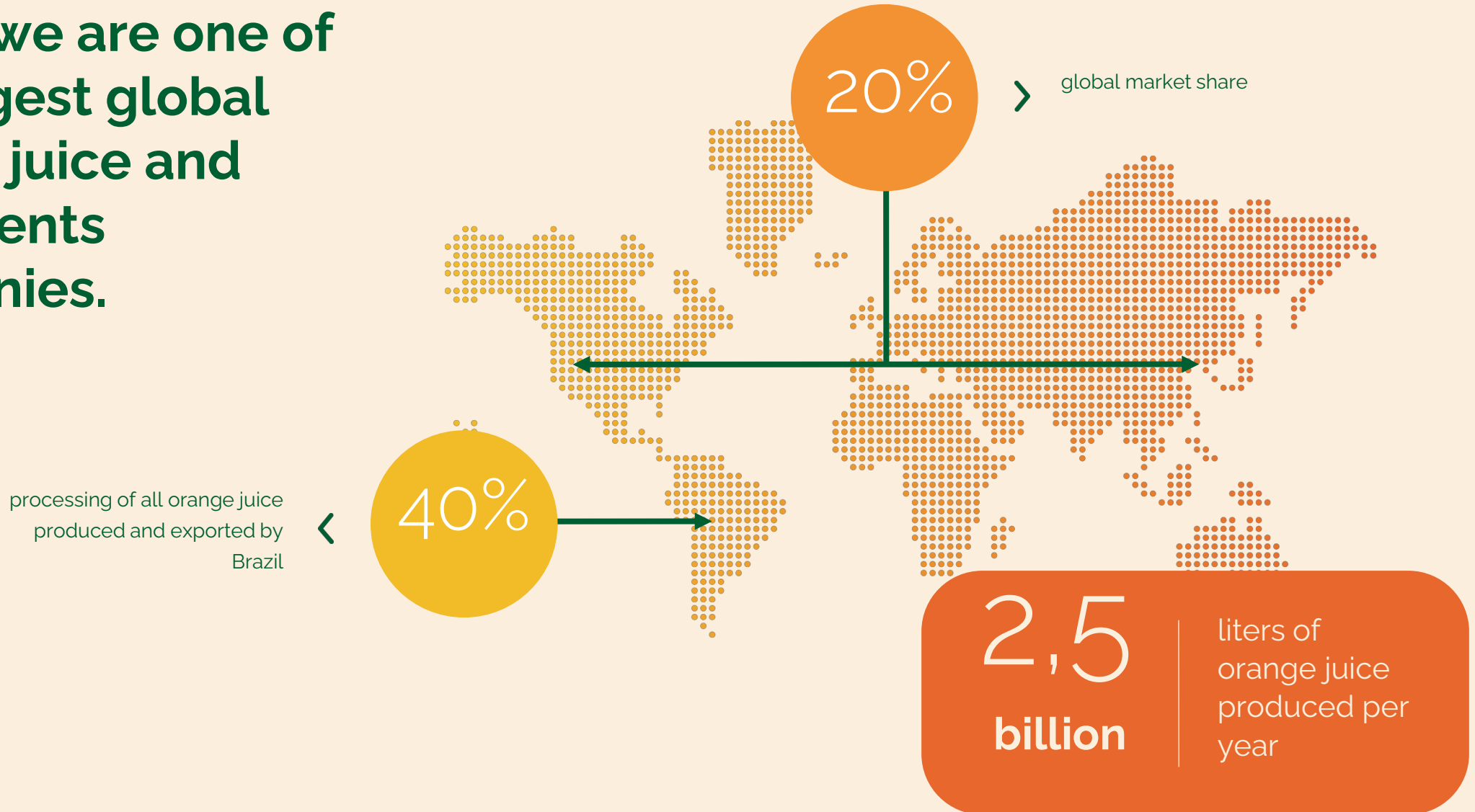
Citrosuco

02

Climate Agenda



Today we are one of the largest global orange juice and ingredients companies.



We operate in an integrated manner throughout the value chain, from seed to product delivery around the world.



5 TERMINALS

Santos (BR), Wilmington (EUA), Ghent (Bélgica), Toyohashi (Japão) e Newcastle (Austrália) (5 navios dedicated e 1 multi-position)



3 PLANTS

Matão (SP), the largest orange juice processing plant in the world; Catanduva (SP); Araras (SP);



7 OFFICES

Brasil, EUA, Áustria, Austrália, Bélgica, Japão e China



26 FARMS

73.000 hectares and more than 25 millions of planted trees

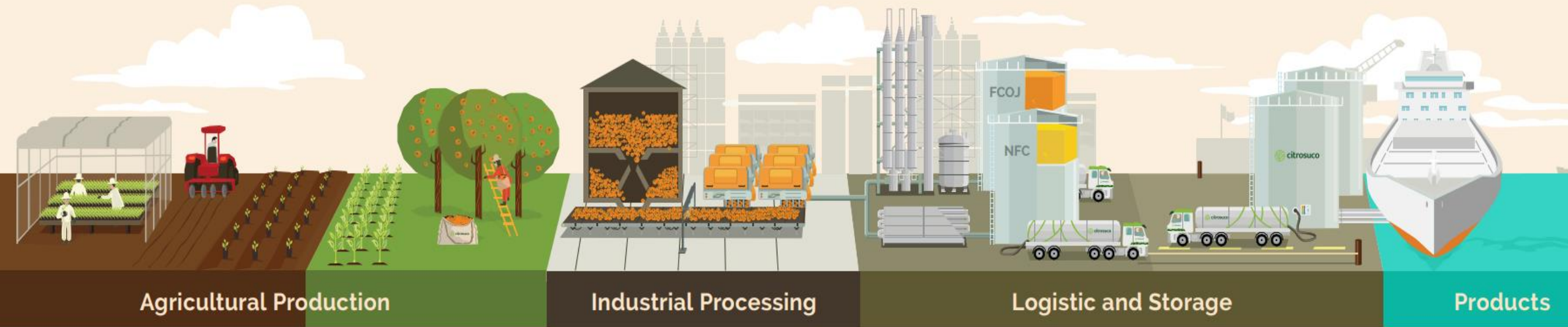


5.300 EMPLOYEES

more than 12.000 durante during harvest

Sustainable value chain

GRI 103-2, 103-3 - Supply Chain Management, GRI 103-2, 103-3 - Innovation & Technology,
GRI 103-2, 103-3 - Productivity and Operational Efficiency,
GRI 102-9, 102-10, 102-11, 102-12, 304-2, 308-1, 412-1, 414-1, 416-1, FP1, FP5SASB FB-AG-430a.1





Climate Agenda

A photograph of a young child with light brown hair, smiling and holding a whole orange in their right hand. The child is wearing a light-colored long-sleeved shirt and a textured, buttoned vest. The background is a blurred green tree with many oranges hanging from the branches. A dark green diagonal bar is at the top left of the image.

PURPOSE

Nourish **life,**
living legacies.

2030 ESG COMMITMENTS

Nourish life, living legacies.



Our 2030 ESG Commitments

- E Contribute to climate resilience
- E Promote biodiversity
- E Rationally manage water resources
- S Drive social transformation
- S Promote diversity, equality and inclusion
- G Lead a sustainable value chain

2030 Commitments



Promote biodiversity

Structured biodiversity conservation projects for 100% of the hectares destined for environmental protection.

Promote biodiversity

Lead a sustainable value chain

100% of sustainable sourcing

Lead a sustainable value chain

Promote diversity, Equality and inclusion

30% women and/or blacks in leadership (supervisors above);
Ensuring the evolution of the professional career of people with disabilities, guaranteeing learning and growth

Contribute to climate resilience

Contribute to climate resilience

Reduce CO₂ eq emissions by 28%;

Net removal of 1.6 MM ton of CO₂ eq

Rationally manage water resources

Rationally manage water resources

Rationalize water abstraction in 100% of critical hydrographic basins, contributing to increased water availability to stakeholders.

Increase the efficiency of water use in industrial operations by 20% (m³/ton).

Drive social transformation

Drive social transformation

Reduction of greater social vulnerability in 100% of the prioritized territories where we operate, through an integrated agenda of social action and strengthening of public policies.



Citrosuco is leading Food and Beverage sector with targets submitted to the SBTi climate platform...



Companies Committed to SBTi

2600

ALL SECTORS - GLOBAL

17

FOOD AND BEVERAGE PROCESSING SECTOR
- LATIN AMERICA



Sign the commitment

Please sign this document and return a signed copy to the SBTi Operations Team at: commitments@sciencebasedtargets.org. The SBTi reserves the right to carry out due diligence reviews before accepting and publishing commitments.

This SBTi commitment letter can be signed by any organization representative, but the contact details of a managerial level point of contact in the organization is required in the information table below.

Once this commitment letter is processed and you have received formal confirmation over email, your organization will be recognized as "Committed" on the SBTi website and the partner websites of UN Global Compact and We Mean Business. Organizations committing to set a net-zero target will also be added to the UNFCCC Race to Zero website provided the organizations are eligible to join at this time.

Company name: CITROSUCO S.A. AGROINDUSTRIA


Signature

SA PAULO
Place

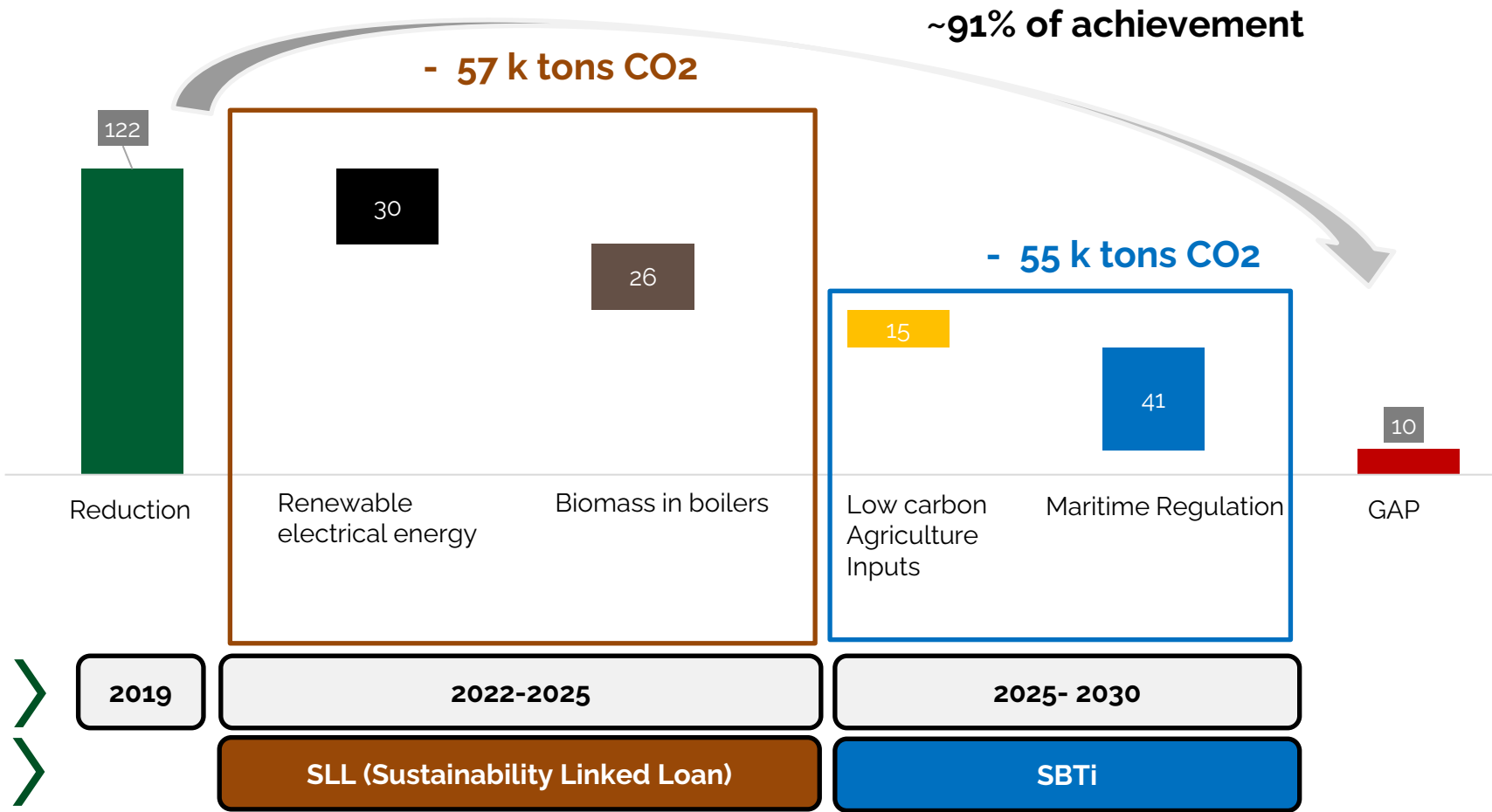
FEB/01/22
Date

Citrosuco Agroindustria S.A.
Brazil, Latin America

COMMITTED

Source: [Companies taking action - Science Based Targets](#)

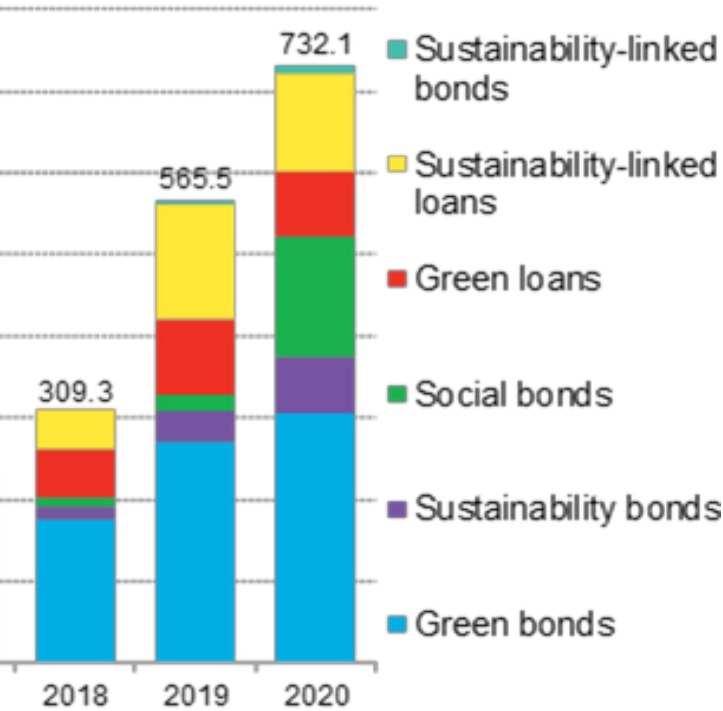
Pipeline of decarbonization to reach climate targets with engagement from all areas of the business...



- ANALYTICAL**
- Target achievement for SLL in 2025.
 - **91% SBTi target achievement (28% reduction)**
 - Other mapped projects **deliver 35k tons**, ensuring target achievement

Citrosuco raises US\$150 million in Sustainability-Linked Loan, basing the financial instrument on decarbonization and sustainable value chain...

Sustainable finance growth in the world (USD)



Source: Bloomberg

Second Party Opinion (SPO)





April/2022

SITAWI developed a Second Party Opinion (SPO) report to provide an opinion on the labelling of the loan between ITAU BBA INTERNATIONAL PLC and Citrosuco S/A Agroindústria as a Sustainability-Linked Loan. The amount of the loan is BRL 150,000,000.00 (one hundred and fifty million Brazilian reais).

SITAWI used its proprietary assessment method, which is aligned with the Sustainability-Linked Loan Principles (SLLP). SITAWI's opinion is based on:

- Performance indicator (KPI) – KPI #1 – Percentage of supply of certified production (%) and KPI #2 – Reduction in scope 1 and scope 2 emissions (%);
- Performance target (SPT) - Target #1 – To reach 75% of the considering a baseline of 62% of certified production in Target # 2 – To reduce scope 1 and scope 2 emissions based on 2019 ktCO2e emissions;
- Penalty – Applying a 20 bps step up if the SPTs are not achieved; external sustainability linked characteristics).
- Company, including research of ESG controversies in which the (corporate ESG assessment).

USD 150 MM
Sustainability-Linked Loan

Thank you!



Orlando Natri
ESG Manager
Citrosuco
orlando.neto@citrosuco.com.br